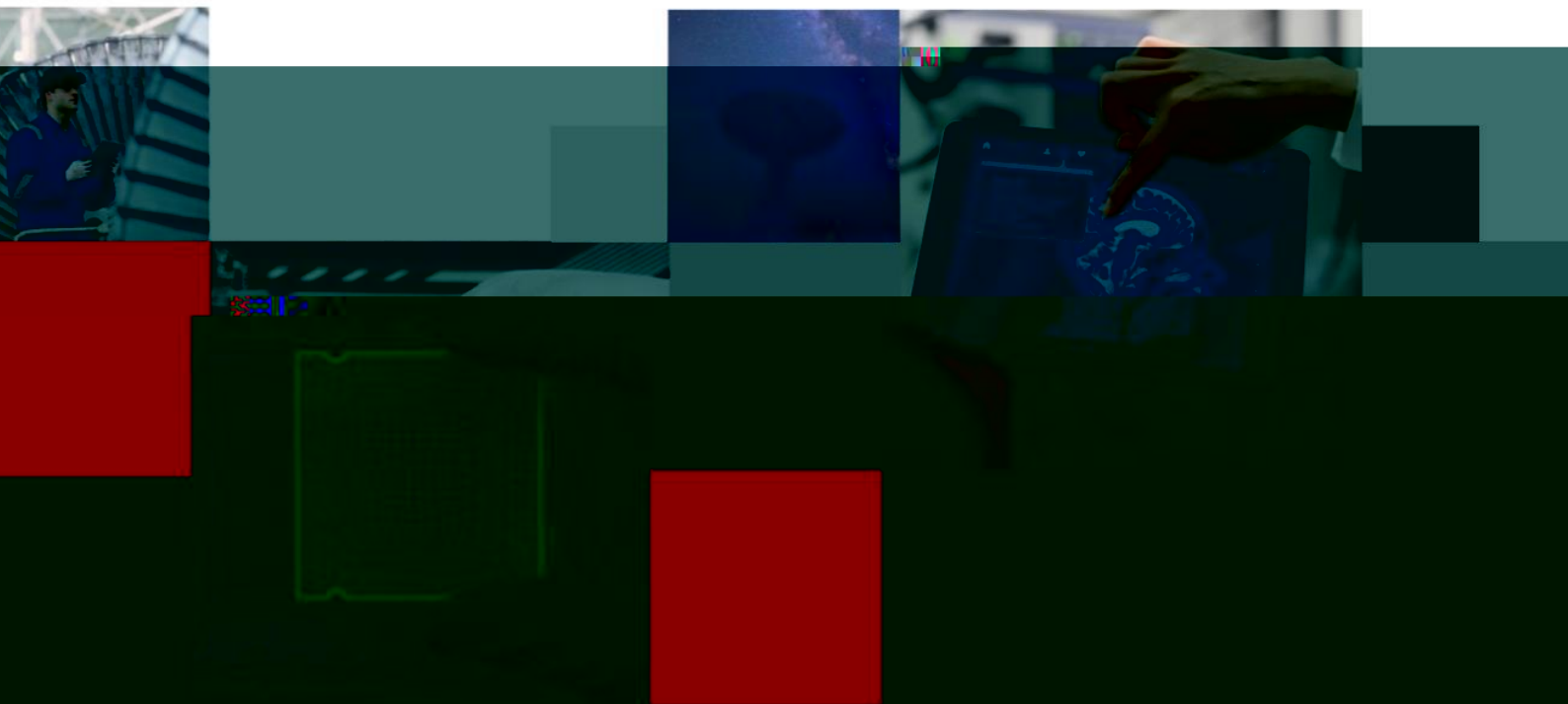
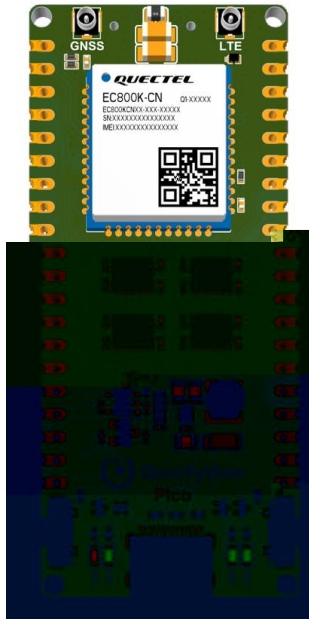


EC800X Pico

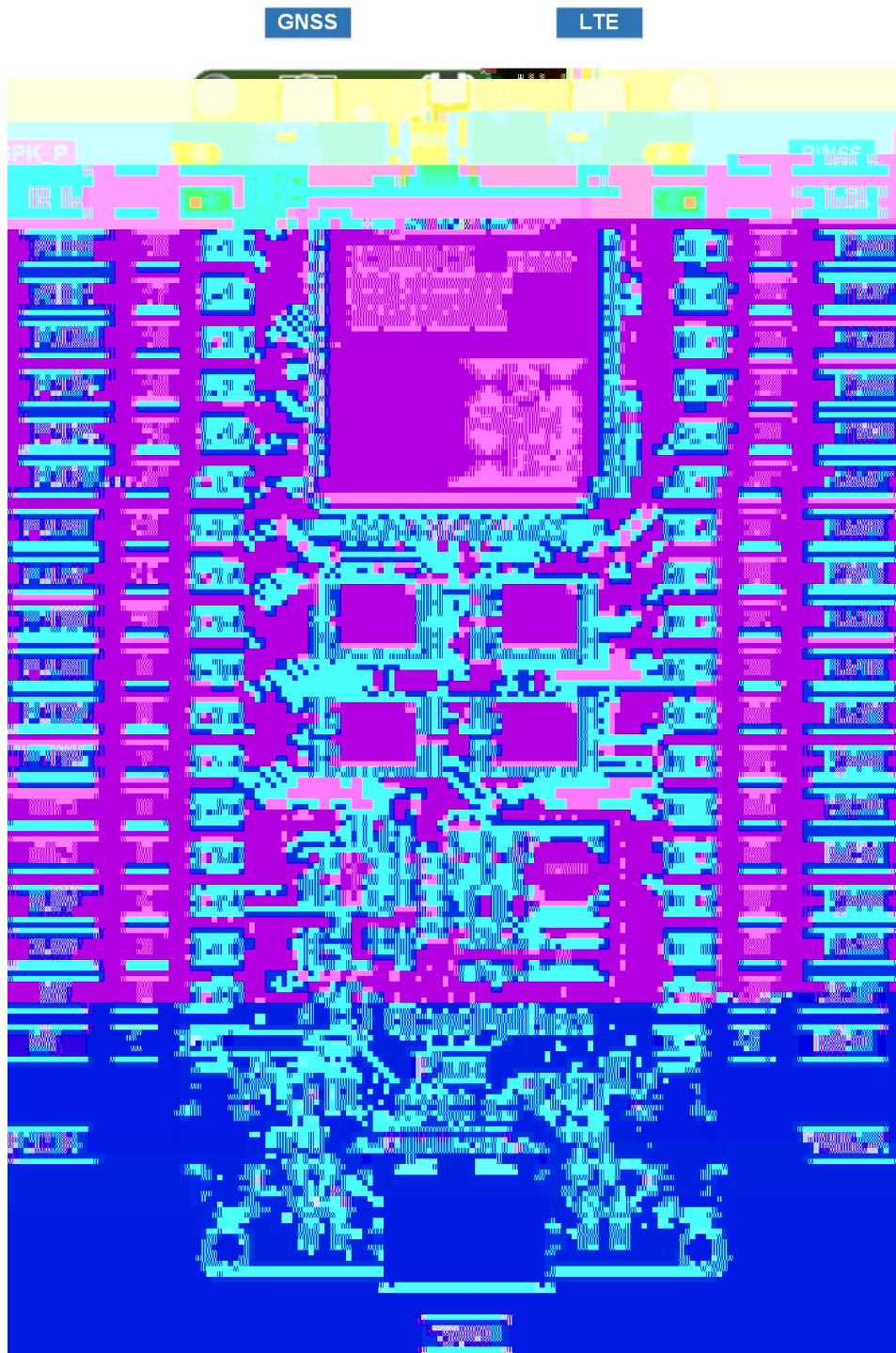


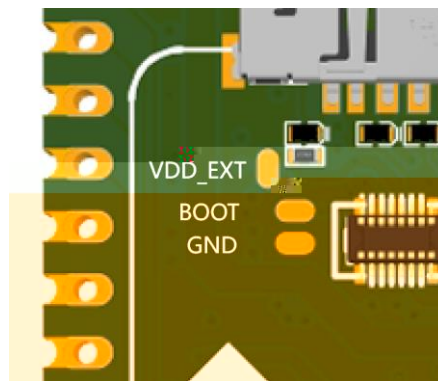
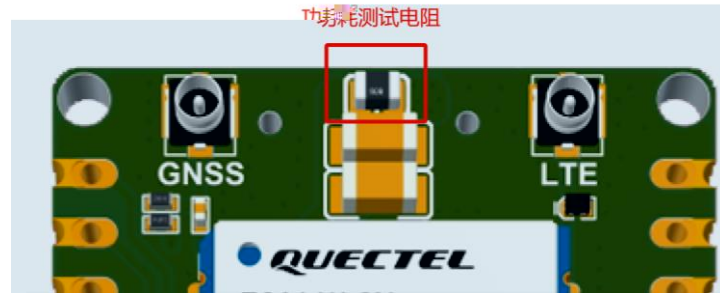
1

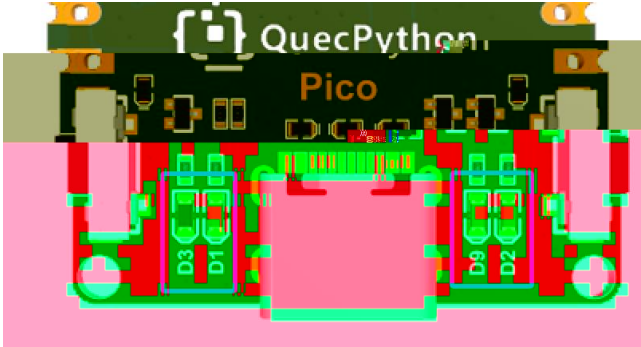


-
-
-
-
-
-
-
-

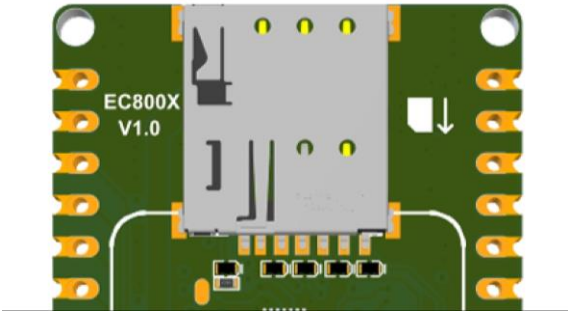
- -
- 2



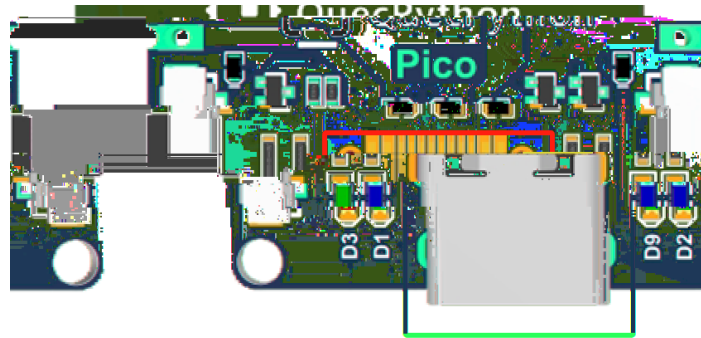




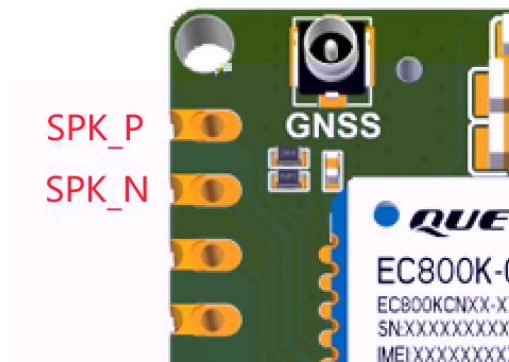
3 SIM



4 USB

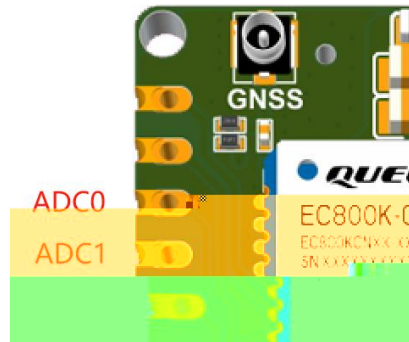


5 SPK



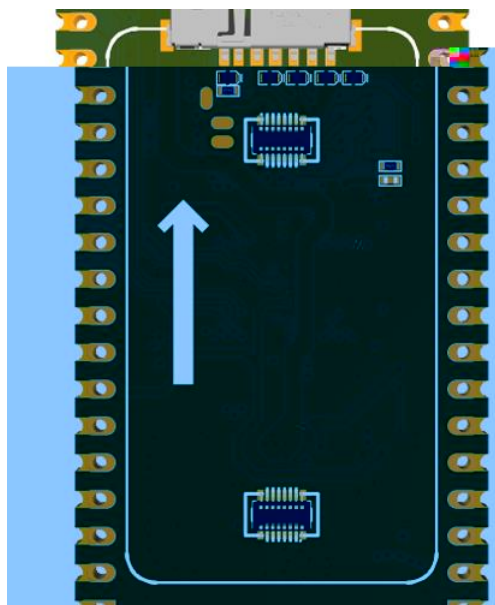
-
-

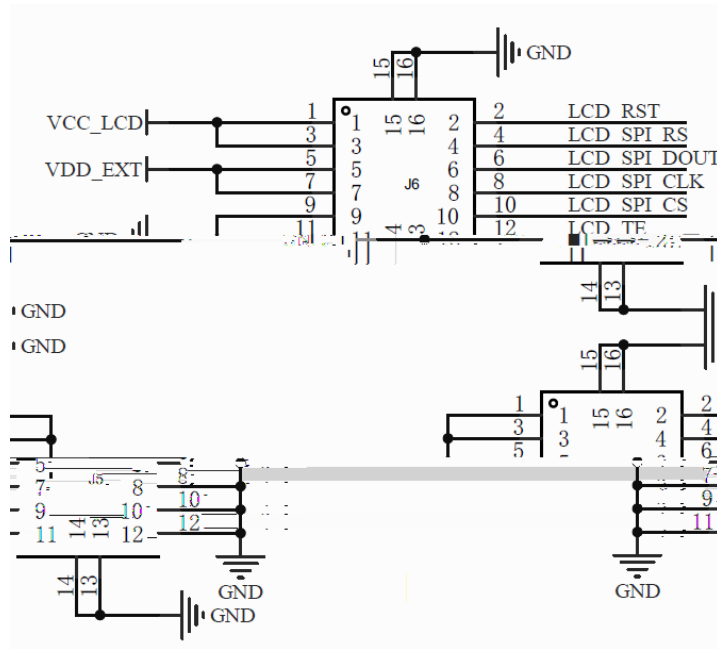
6 ADC



参数	最小值	典型值	最大值	单位
ADC0 电压	0	-	1.2	V
ADC1 电压	0	-	1.2	V
ADC 分辨率	-	-	12	位

7 LCD





NO.	Item	Contents	Unit
1	LCD Size	1.47	inch
2	Display Mode	Normally black	-
3	Resolution	172(H)RGB x320(V)	pixels
4	Pixel pitch	0.0337(H) x 0.1011(V)	mm
5	Active area	17.3892(H) x 32.352(V)	mm
6	Module size	40.00(H) x 20.00(V) x 1.45(D)	mm
7	Pixel arrangement	RGB-Vertical stripe	
8	Interface	4-Line SPI	
9	Display Colors	262K	
10	Drive IC	S17789V3	
11	Luminance(cd/m2)	350 (TYP)	
12	Viewing Direction	All View	
13	Backlight	3 White LED Paralle	
14	Operating Temp.	-20°C ~ +70°C	
15	Storage Temp.	-30°C ~ +80°C	°C
16	Weight	2.7	g

8

引脚名	引脚号	I/O	描述	备注
ANT_MAIN	35	AIO	主天线接口	50 Ω 特性阻抗。

备注

模块支持 Wi-Fi Scan 功能。由于共用主天线接口，两种功能不可同时使用，时分复用，Wi-Fi Scan 只接收不发送。

工作频段	发送 (MHz)	接收 (MHz)
1920~1980	2110~2170	1910~1930
1710~1785	1805~1880	1700~1780
824~840	860~880	810~835
880~915	925~960	810~835
2010~2025	2010~2025	LTE-TDD B34
2570~2620	2570~2620	LTE-TDD B38
1880~1920	1880~1920	LTE-TDD B39
2300~2400	2300~2400	LTE-TDD B40
2535~2675	2535~2675	LTE-TDD B41

	最小值	频段	最大值
2 dB	< -39 dBm	LTE-FDD B1/B3/B5/B8	23 dBm ±
2 dB	< -39 dBm	LTE-TDD B34/B38/B39/B40/B41	23 dBm ±

频段	接收灵敏度（典型值）（dBm）			3GPP 要求 （主集 + 分集）
	主集	分集	主集 + 分集	
LTE-FDD B1 (10 MHz)	-99.5 dBm	-	-	-96.3 dBm
LTE-FDD B3 (10 MHz)	-99.0 dBm	-	-	-93.3 dBm
LTE-FDD B5 (10 MHz)	-98.5 dBm	-	-	-94.3 dBm
LTE-FDD B8 (10 MHz)	-99.0 dBm	-	-	-93.3 dBm
LTE-TDD B34 (10 MHz)	-100.0 dBm	-	-	-96.3 dBm
LTE-TDD B38 (10 MHz)	-99.0 dBm	-	-	-96.3 dBm
LTE-TDD B39 (10 MHz)	-100.0 dBm	-	-	-96.3 dBm
LTE-TDD B40 (10 MHz)	-100.5 dBm	-	-	-96.3 dBm
LTE-TDD B41 (10 MHz)	-99.0 dBm	-	-	-94.3 dBm

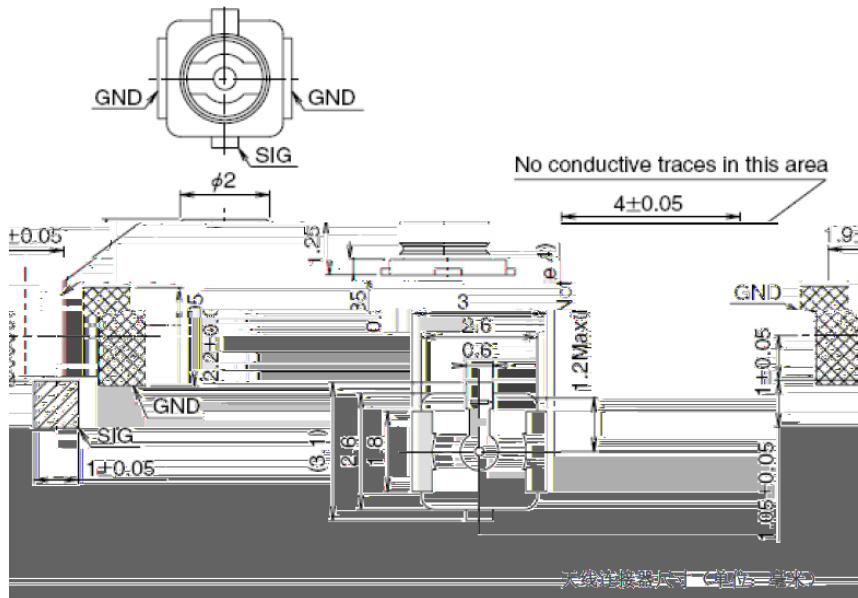
-
-
-

参数	条件	典型值	单位
灵敏度	捕获	-146	dBm
	重捕	-160	
	追踪	-160	
首次定位时间	冷启动 @ 空旷区域	28	s
	温启动 @ 空旷区域	27	
	热启动 @ 空旷区域	27	



备注

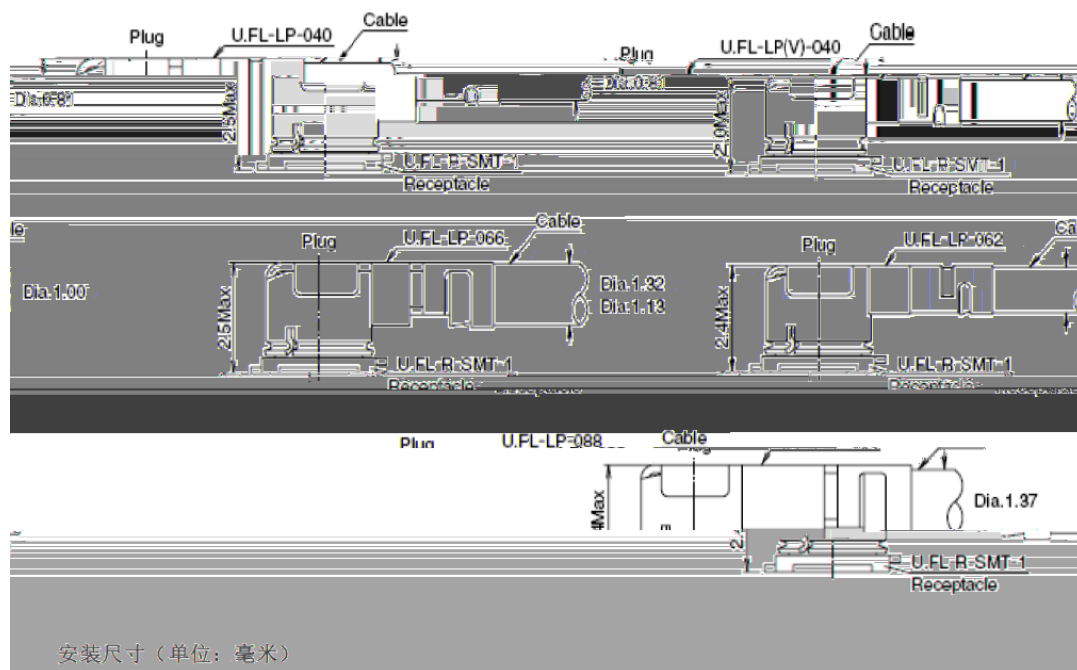
1. 追踪灵敏度：横轴可以保持对目标信号的跟踪和定位所需的最低信号电平（持续定位至少 2 分钟）。
2. 重捕灵敏度：接收器对已丢失的信号重新捕获所需的时间。
3. 捕获灵敏度：接收器在冷启动后 3 分钟内捕获信号所需的最低信号电平。



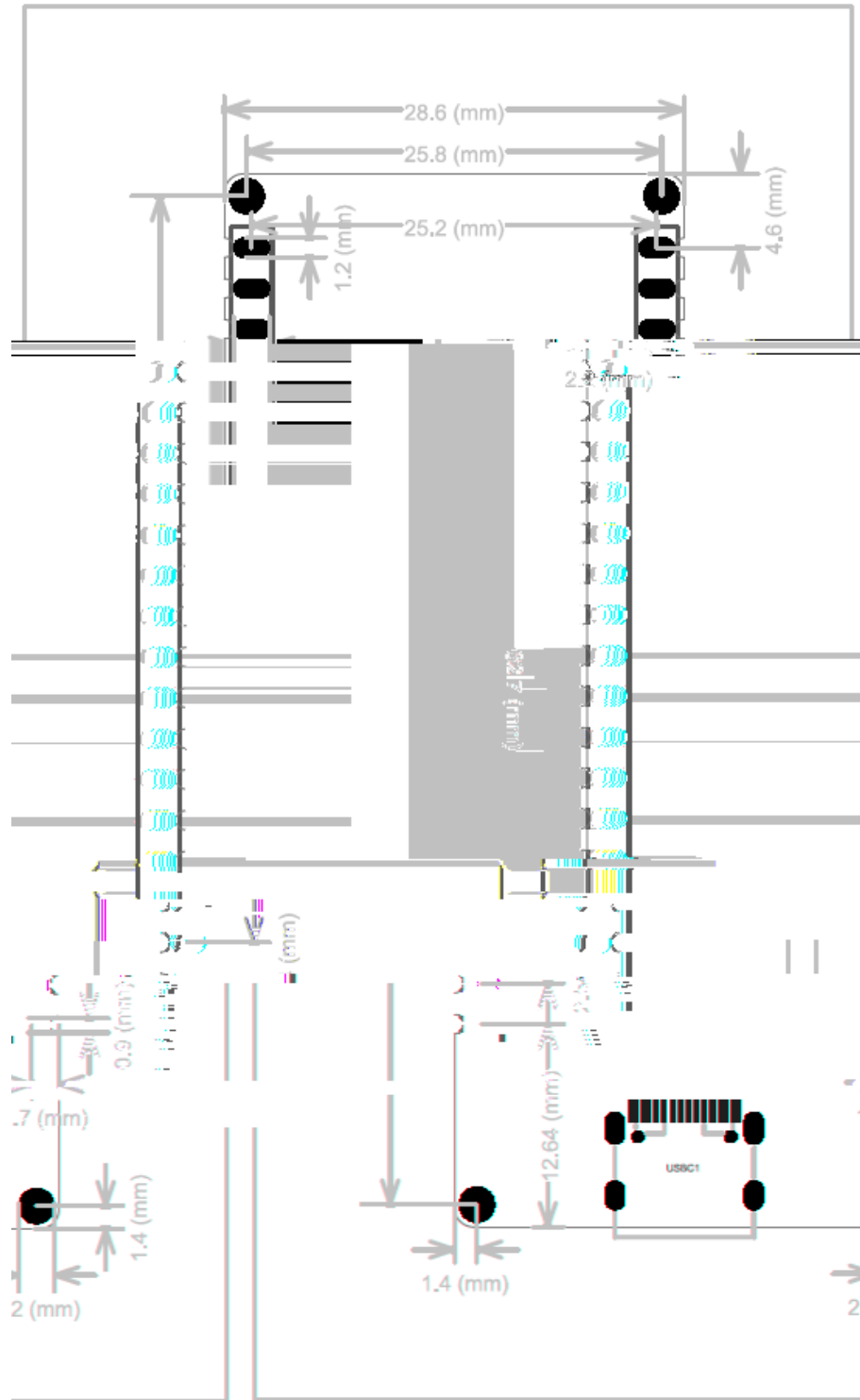
	U.FL-LP-040	U.FL-LP-040	U.FL-LP-040	U.FL-LP-040	U.FL-LP-040
Mated Height	2.4mm Max. (2.3mm Nom.)	2.5mm Max. (2.4mm Nom.)	2.5mm Max. (2.4mm Nom.)	2.0mm Max. (1.9mm Nom.)	2.4mm Max. (2.3mm Nom.)
Applicable Coaxial cable	Dia. 1.27mm Coaxial cable	Applicable Coaxial cable	Dia. 1.33mm and 1.35mm Coaxial cable	Dia. 1.32mm Coaxial cable	Dia. 1.32mm Coaxial cable
Weight (mg)			53.7	59.1	
RoHS	YES				

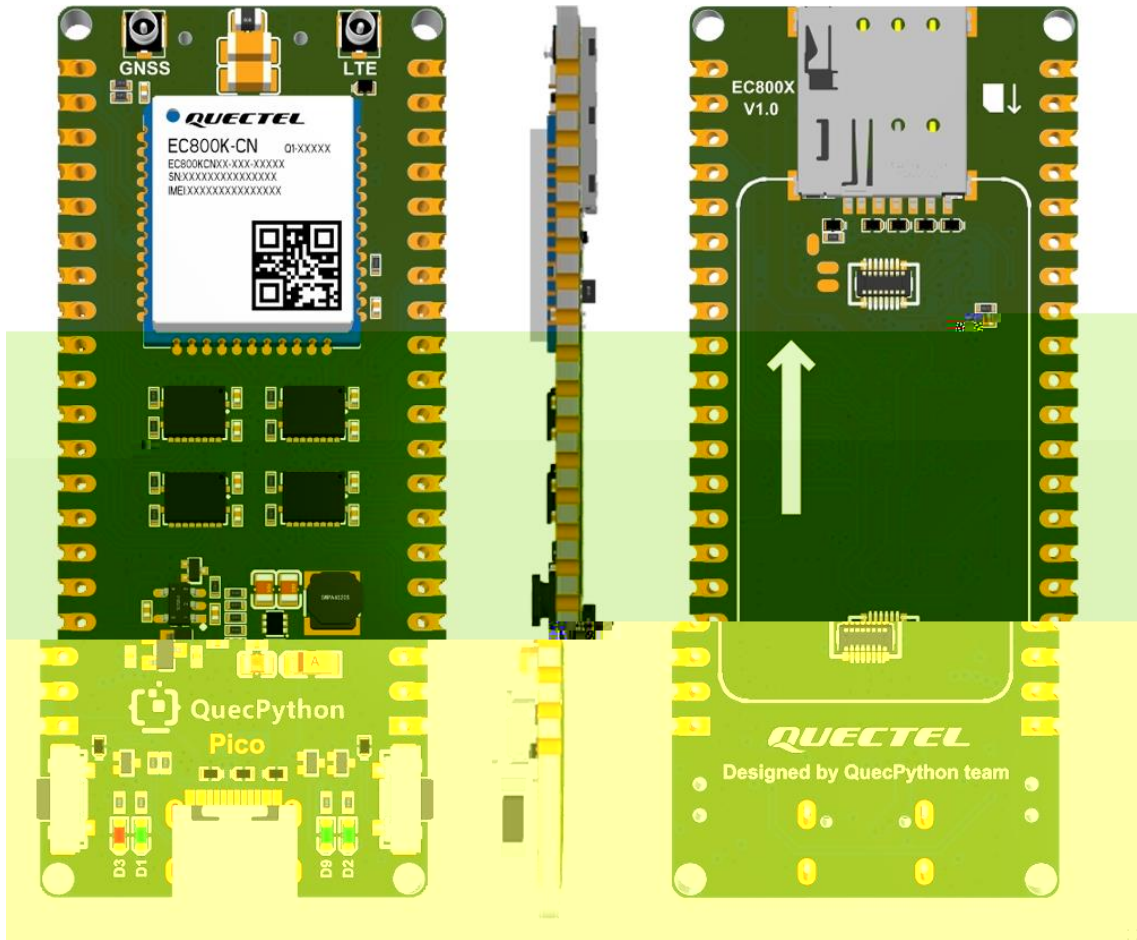
接线系列

U.FL-LP 连接



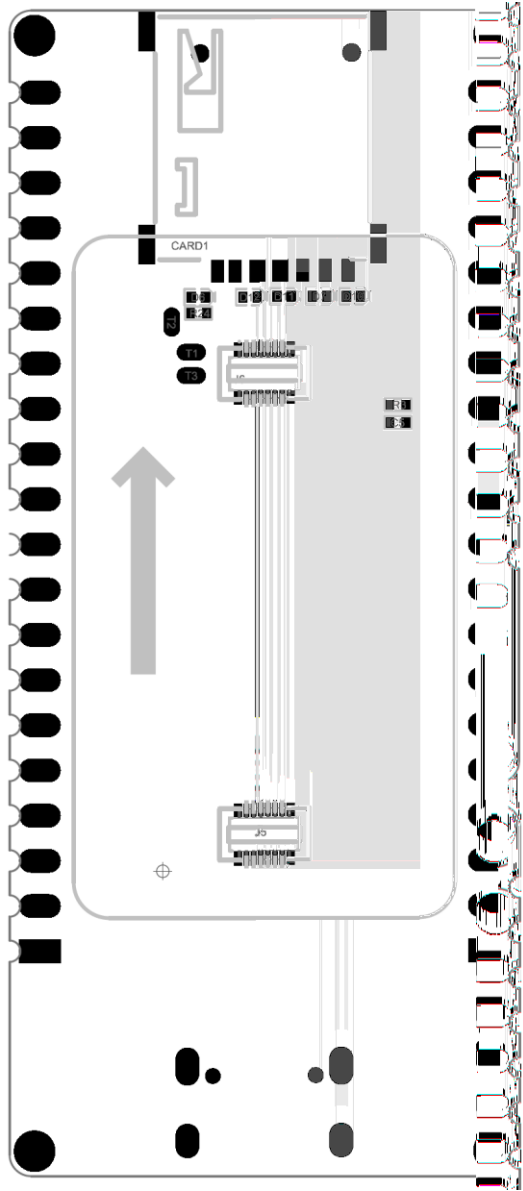
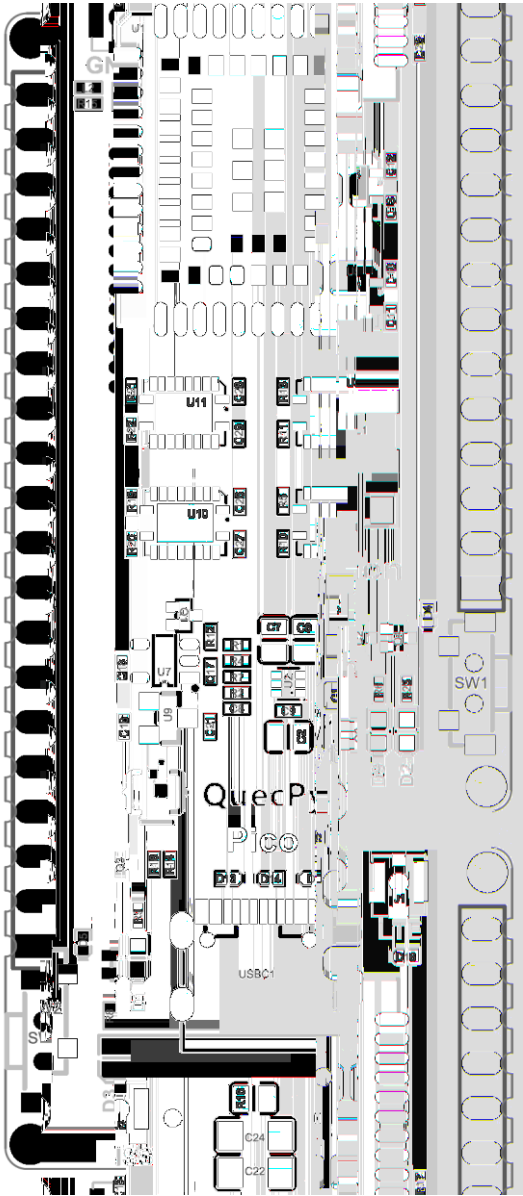
安装尺寸 (单位: 毫米)

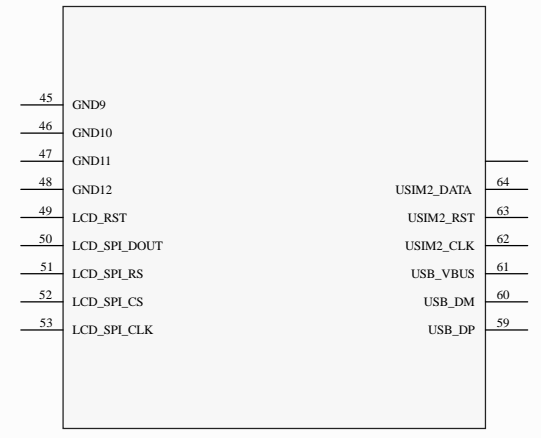
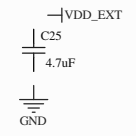
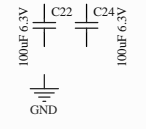
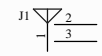
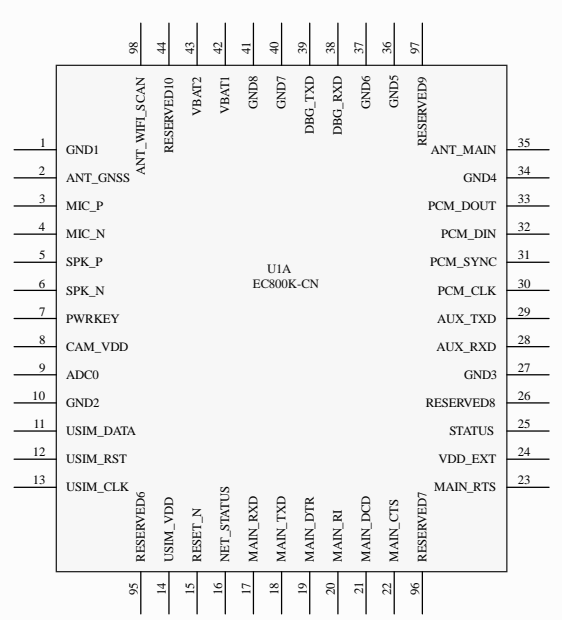




11

12





1

2

3

4

A

A

B

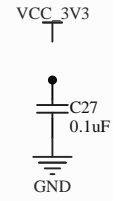
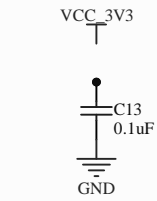
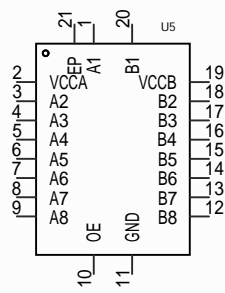
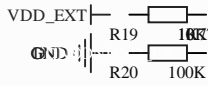
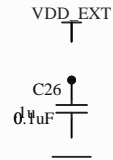
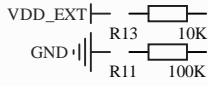
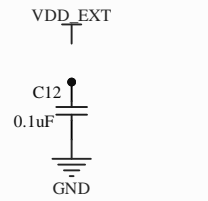
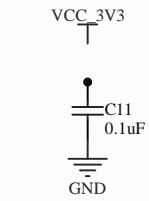
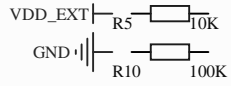
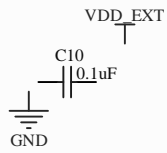
B

C

C

D

D



Level Translator

1

2

3

4

